

GEN3SYS[®]

High Penetration Drilling System

Cast Iron Geometry

Allied Maxcut Engineering Co. Limited is pleased to announce the release of C2 Carbide Cast Iron Geometry for GEN3SYS[®] Inserts.

The inserts are coated with AMEC's proprietary AM200[®] coating which allows for optimum performance with regards to penetration rates and tool life.

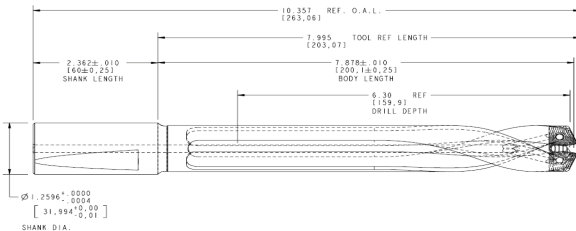
The additional product offering will extend through our entire diameter range from 12mm to 32mm.

The C2 Cast Iron Geometry will be stocked in the sizes below, with all other diameters being available as non-stock standards.

Series	Part Number	Stk.
12	5C212H-12-CI	•
12	5C212H-12.5-CI	•
13	5C213H-13-CI	•
13	5C213H-13.5-CI	•
14	5C214H-14-CI	•
14	5C214H-14.5-CI	•
15	5C215H-15.5-CI	•
16	5C216H-16-CI	•

Series	Part Number	Stk.
17	5C217H-17-CI	•
17	5C217H-17.5-CI	•
18	5C218H-18.5-CI	•
20	5C220H-20.5-CI	•
20	5C220H-21-CI	•
20	5C220H-21.5-CI	•
22	5C222H-22-CI	•

All other sizes available as non-stock standards



Whistle Notch Holders

Allied Maxcut Engineering Co. Limited is pleased to announce the addition of a new 'Whistle Notch' shank option as standard to the already highly versatile GEN3SYS[®] high penetration drilling system!

Series	Ø	Part Number	Shank Ø	Shank Length	Stk.
14	5x	60514S-20WN	20	42.0	•
14	7x	60714S-20WN	20	42.0	•
16	5x	60516S-20WN	20	42.0	•
16	7x	60716S-20WN	20	42.0	•
18	5x	60518S-25WN	25	53.0	•
18	7x	60718S-25WN	25	53.0	•
22	5x	60522S-25WN	25	53.0	•
22	7x	60722S-25WN	25	53.0	•
24	5x	60524S-25WN	25	53.0	•
24	7x	60724S-25WN	25	53.0	•
26	5x	60526S-32WN	32	58.0	•
26	7x	60726s-32WN	32	58.0	•
29	5x	60529S-32WN	32	58.0	•
29	7x	60729S-32WN	32	58.0	•

Allied Maxcut Engineering Co. Limited

93 Vantage Point, Pensnett Estate, Kingswinford, DY6 7FR, ENGLAND



+44 1384 400900



+44 1384 404878



enquiries@alliedmaxcut.com



www.alliedmaxcut.com